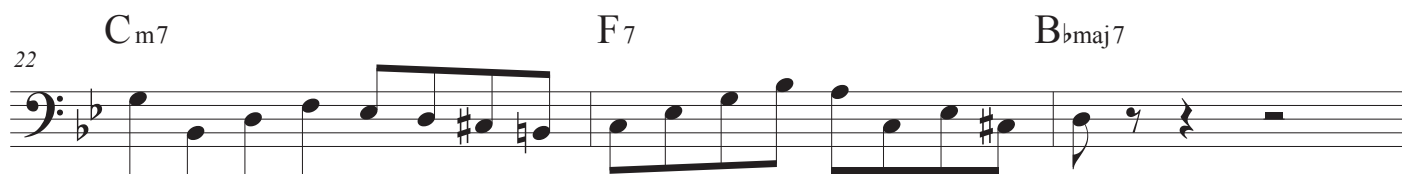
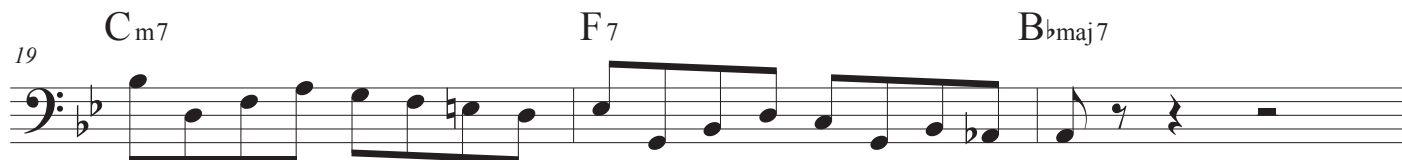
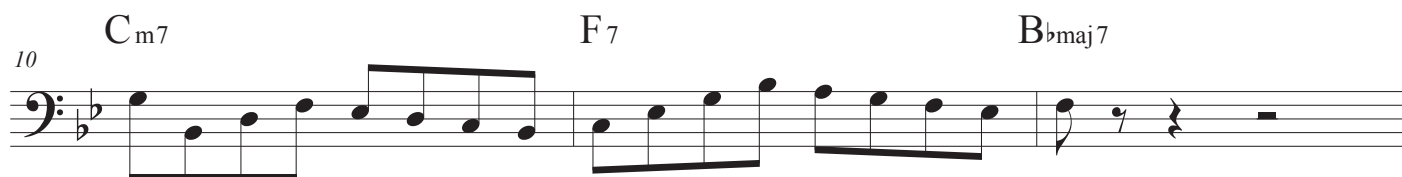
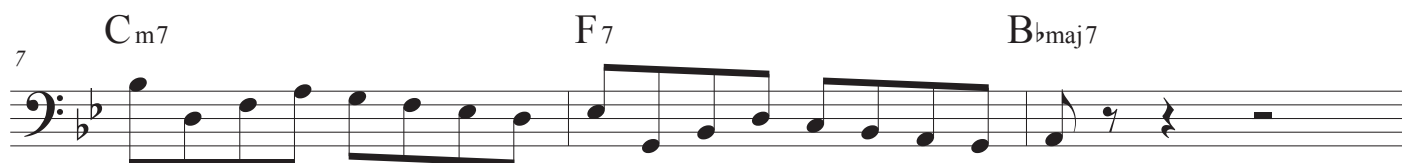


Bass clef

BROKEN CHORDS



25 C_{m7} F_7 B_{bmaj7}

29 C_m7 F₇ B_bmaj7

The musical notation shows three measures. Measure 29 starts with a bass clef and a key signature of one flat (B-flat). It contains a quarter rest followed by eighth notes G2, A2, B2, C3, D3, E3, and F3. Measure 30 has a chord change to F7 at the beginning, indicated by a bracket above the staff. The notes are G2, A2, B2, C3, D3, E3, and F3. Measure 31 has a chord change to Bbmaj7 at the beginning, indicated by a bracket above the staff. The notes are G2, A2, B2, C3, D3, E3, and F3.

[illegible]